

# State Pension Forecast

For most people, the State Pension will form an important part of their retirement income.

Although the Government has made changes to what is paid and when, the amount you will get from the State will still depend on what you earned, how long you have worked and what types of pension scheme you have been in during your working life. When you get it will depend on how old you are.

Having a State Pension forecast in front of you when you speak with us can really help us understand your current situation and we may be able to suggest ways that you can improve your State Pension benefits. This applies to you and your partner, so we have included space for details of both of you on this form.

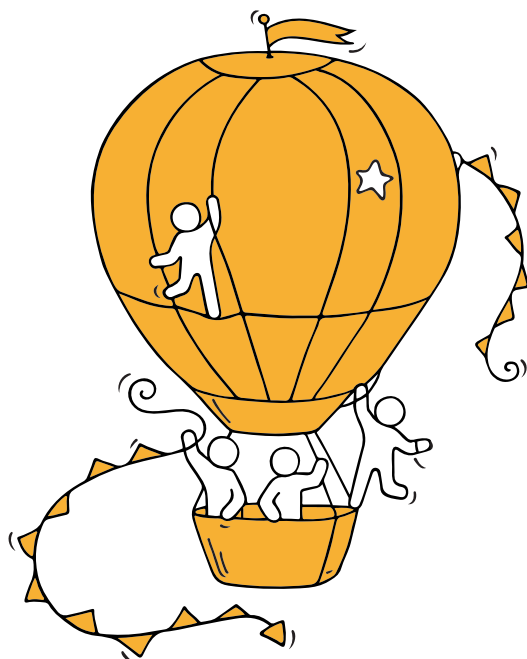
### How to get a State Pension Forecast

You can now get a forecast online in a matter of minutes. Details of how to get the forecast are shown below. Before you start, make sure you have some official documents with you such as one of the following:

- > A valid UK passport
- > A P60 for the latest tax year
- > Payslips – for the last 2 to 3 months.

You will also need a phone to hand, ideally a mobile phone, so that you can receive a security code that will be sent to you.

You can start by entering this website address: <https://www.gov.uk/check-state-pension> or search for 'state pension forecast' to find this website. Then click on the 'start now' button. If you are within 30 days of your State Pension age, or over this age, then you will need to call the Pension Service on the numbers shown on the website instead of using this website.



If you have already registered on the Government Gateway, you can use your existing details to log in. If not, click on the 'Don't have a Government Gateway account' link and follow the instructions where you will need to confirm your identity using the documents above, and click on 'Continue'. Make a note of your Gateway User ID and make sure you can remember your password.

### Your State Pension Forecast

#### You

#### Your spouse/partner

Name

---

---

Gateway User ID

---

---

Reminder for your password

---

---

Date of this forecast

---

---

State Pension date is

---

---

**Estimate based on your National Insurance**

**Estimate based on their National Insurance**

**record up to 5 April** \_\_\_\_\_

**record up to 5 April** \_\_\_\_\_

£ \_\_\_\_\_ a week

£ \_\_\_\_\_ a week

---

---

**Forecast if you contribute another** \_\_\_\_\_

**Forecast if they contribute another** \_\_\_\_\_

**years before April 5** \_\_\_\_\_

**years before April 5** \_\_\_\_\_

(the year before your State Pension age)

(the year before their State Pension age)

£ \_\_\_\_\_ is the most you can get

£ \_\_\_\_\_ is the most they can get

---

**Do remember** that these figures are estimates and are not guaranteed. It is possible that the date your State Pension is due could be altered, especially if you are many years from this date.



WPS Advisory Limited is authorised and regulated by the Financial Conduct Authority. Our Financial Services Register number is 624546. WPS Advisory Limited is a Company registered in England & Wales under Company Number 08874015. Our registered office address is: 7 St John Street, Mansfield, Nottinghamshire, NG18 1QH.